



GHT5 FILTER INSTALLATION INSTRUCTIONS – PAGE 1

INTRODUCTION

GREEN HITECHS water filters offer exceptional purification by incorporating the most advanced filter elements and manufacturing technology in the world. Our filters are capable of removing water born contaminants to provide your family with truly safe drinking water.

CONTENTS

Installation Guidelines Sheet, 2-Filtration Media Units, 2-Washers (black color), 2-Wing Nuts, 1-Primer Washer (tan color)

ASSEMBLY INSTRUCTIONS

1. Thoroughly wash your hands before installing the filters to prevent filter & components contamination.
2. Verify all parts listed above are included in the package.
3. Be sure to prime both GREEN HITECHS filter media units (instructions are on the reverse side of this sheet) prior to installing.
4. Insert the threaded portion of the filter through one washer and press it against the base of the filter.
5. Insert the threaded mount stem through the hole in the interior base of the upper chamber.
6. Tighten the wing nut onto the threaded portion of the filter unit to secure it to the base of the chamber.
7. Repeat step numbers 3 through 6 above, until each filter media has been installed and water does not seep through each connection.

OPERATION

- Using room temperature (cool) water, fill the upper chamber (**never use heated water**) and place the lid over the upper chamber.
- Cycle the first full chamber of water through the system into the lower chamber. This removes fines or dust from the media units.
- Open the spigot and drain & dispose of all water (*Note: Do not be concerned if particulate is visible within flush water, this is normal*).
- Once the system has been flushed and water disposed, refill the upper chamber and begin enjoying fresh, purified water.

Note: It is normal for our Filter Units to take up to 15 minutes to begin dripping. Water gradually replaces micro air pockets in the filter until the maximum flow rate is achieved. Typically flow rates increase to their optimal levels after the first 12-20 hours of use.

MAINTENANCE

Over time, it is normal for flow rates to gradually decline as the media filters out harmful particulates. To maintain flow rates, we advise scrubbing the exterior surface of each filter. To return the flow rate back to normal, remove the filter unit and scrub it with a stiff toothbrush or ScotchBrite® pad under cold running water and then we advise that you re-prime the filter. Do this for all filters in your device. Be very careful not to contaminate the threaded portion of the filter units. *In the event a unit is contaminated, carefully wipe the threads with an alcohol swab and let it dry before re-installing.* **NEVER clean filter units with soap and NEVER wash them in a dishwasher.**

SYSTEM TEST

Your GREEN HITECHS filter units will remove red food coloring from water. To verify the system is functioning properly, fill the upper chamber and add one tablespoon of red food coloring per gallon in your system. Allow the colored water to pass through the system. If the red food coloring is totally gone, your purification system is functioning. If not, double check the wing nuts to make sure they are securely tightened and verify water is not seeping through the holes in the upper chambers, then re-run the test. We suggest you perform this test prior to the first actual use. We also advise performing the test every 3 to 6 months during normal use and before you take your system out of the country. In the event you remove your system from daily operation or after drying and storing the filter units for an extended period of time, it is advisable to perform this test.

GENERAL WARRANTY INFORMATION

GREEN HITECHS filter media units have a limited two-year, pro-rated (on a quarterly basis) warranty, from the date of purchase. **GREEN HITECHS (GRHT)** will replace or repair a product it deems is not properly functioning during the stated warranty period. This warranty is limited to the repair or replacement of defective materials or workmanship only. GRHT shall not be held liable for incidental or consequential damage to personal property from, but not limited to, a defective unit, improper use, abuse, accident, or neglect, etc. GRHT shall not be responsible for any damage or loss other than for the product purchased. Damage to the filter units deemed to be caused by customer or misuse of the system is excluded under this limited warranty. Customer is responsible to replace parts when, due to the natural course of wear and tear, they are scheduled to be replaced. No warranty will apply to units which have been: a) used for purposes not intended by the manufacturer, nor b) altered so as, in the manufacturer's judgment, to affect adversely its performance. This limited warranty is for the original retail purchaser only and is nontransferable. Repair or replacement of parts will be made upon delivery to manufacturer's plant or authorized service dealer at customer's expense. The laws of the State of Texas, USA, will govern any disputes regarding this limited warranty or claim(s) made. This limited warranty which is given expressly in lieu of all warranties, expressed or implied, or merchantability and fitness for a particular purpose, constitutes the only warranty made by GREEN HITECHS (GRHT).

Each GREEN HITECHS element will give efficient purification for up to 3,000 gallons (6,000 per set of two) for the contaminants listed separately by the manufacturer. The GREEN HITECHS filter media formulation has been tested by State & EPA accredited laboratories to exceed EPA & ANSI/NSF (Std. 53) protocol. Tested by Analytical Services and the County of Los Angeles, Environmental Toxicology Lab.

FILTER INSTALLATION INSTRUCTIONS – PAGE 2

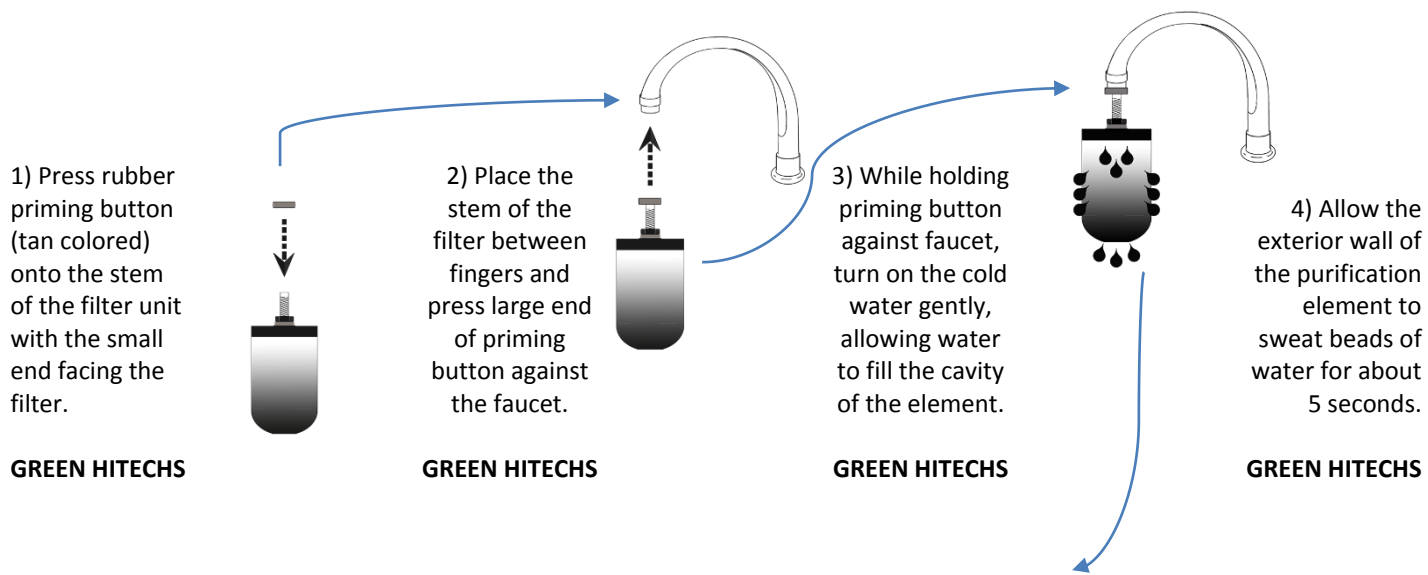
PRIMING THE GREEN HITECHS WATER FILTRATION MEDIA

GREEN HITECHS filter media micro-pores are very small, even food coloring added to source water is filtered out. Our proprietary filter media composition combined with these micro-pores provides exponentially increased efficiency in removing: viruses, pathogenic bacteria and other waterborne contaminants.

GREEN HITECHS advises priming each filter unit to establish proper flow prior to use. Water tension can change from season to season and also varies greatly between cities, towns, regions and countries, etc. The higher the water tension, the more difficult it is for water, using gravity pressure alone, to force air out of the micro-pores in a new filter. Simply prime your CB-5 water filter unit to force the air from the filter's micro-pores and achieve proper water flow through the filter.

If treated water is not available in your area or, while traveling, GREEN HITECHS recommends using a bottle of purified water or a GREEN HITECHS Water Filtration bottle to prime the purification elements. Using bottled water, have one person hold the element, with the priming button attached and facing upward. Have a second person press the mouth of the bottled water against the priming button and squeeze until water is forced through the entire exterior wall of the element and it begins to sweat beads of water. Alternatively, a GREEN HITECHS Sport filtration bottle can be used to prime the elements by inserting the straw or bottle spout into the hole in the filter stem (with or without using the priming button) and then with the stem of the GREEN HITECHS unit facing up, squeeze the GREEN HITECHS Filtration bottle until water is forced through the entire exterior wall of the element and it begins to sweat beads of water.

IMPORTANT: Store the priming button in a safe place, after priming your filter(s). Re-prime filters after cleaning (see maintenance instructions) and/or when elements have been allowed to dry for a prolonged period of time.



5) Rinse process dust from exterior of the filter. The filter unit has now been successfully primed. Repeat steps 1 - 5 for each additional filter unit.